

## Accessibility Guide for Thornfield Camping Cabins



### Welcome

Thornfield Camping Cabins is set in a picturesque landscape and rural setting between the border city of Carlisle and Caldbeck on the edge of the Lake District National Park. Karen and Andrew have welcomed clients since July 2016 and along with their team, they aim to provide you with a warm personalised welcome and a pleasant stay; and if you wish you may bring your well-behaved four legged friends too! Providing high quality, affordable and warm year-round self catering accommodation with home from home comforts, in a tranquil rural setting, a real back to nature holiday experience surrounded by woodlands, walks, a range of wildlife and extensive rural views. Easy access to a host of village amenities.

Watch the video: [Thornfield Altitude tour](#)

### At a Glance

#### Level Access

- The main entrance has level access with a ramp. The ramp is permanent.
- There is level access from the main entrance to:
  - Meg's Room
  - Acceptable smoking area on site

#### Visual

- The walls and the doors have high colour contrast.
- Some parts of the venue have low lighting.

### Getting here

Thornfield, Hawksdale, Dalston, Carlisle, Cumbria. CA5 7BX

### **Travel by public transport**

- You can get to Thornfield Camping Cabins by bus and train.
- The nearest bus stop at the Bridge End Inn pub on the edge of Dalston village. Please note that it is a uphill walk from the bus stop to our site.
- The bus stop is 1.0 miles / 1.6 km from Thornfield Camping Cabins.
- The nearest train station is Dalston . The train station is 2 miles / 3.2 km from Thornfield Camping Cabins.

### **Travel by taxi**

- You can get a taxi with Jason (Dalston Village) by calling mob: 07858 574 154.
- You can get a taxi with Metro Taxis (Carlisle) by calling Tel: 01228 522088.
- We have a transfer service for visitors. Subject to staff availability.

### **Parking**

- There are accessible parking spaces. Parking is free for one vehicle cabin.
- From the car park to the entrance, there is level access. There is a permanent ramp.
- The path is sloped.
- The route is 3000mm wide, or more.



### Access to site

### Arrival

#### **Path to main entrance**

- From the street to the main entrance, there is level access.
- There is a permanent ramp.
- The path is 4000mm wide, or more.
- The path is sloped.

#### **Main entrance**

- The main entrance has level access.
- There is a permanent ramp.

## Getting around inside

### Visual Impairment - General Information

- We have high colour contrast between walls and doorframes.
- Some parts of the venue have low lighting.

### **Site facilities**

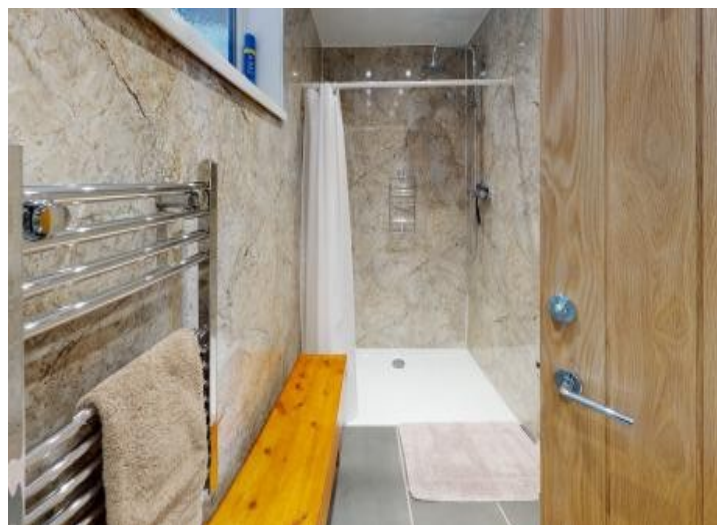
- The taps are lever operated. There is space under the basin, with no pedestal or boxing.
- Most of our glamping cabins have a compact wet room only. Not suitable for wheelchairs

### **Meg's Room**

- From the main entrance to the laundry, there is level access. There is a permanent ramp. The route is 4000mm wide, or more. We have an iron and ironing board. You can use the ironing board sitting down.



**Meg's Room**



**Wheelchair accessible shower room**

## **Getting around outside**

### **🚭 Smoking**

#### **Acceptable smoking area on site**

- From the main entrance to the smoking area, there is level access. There is a permanent ramp. The route is 1000mm wide, or more.
- The entrance is 3000mm wide.
- The path route to the smoking area is 1000mm wide

## **Customer care support**

### **Accessibility equipment**

- On the grassy areas outside the cabins. All dog waste must be bagged and binned in the general waste bin at the main entrance gate.
  - We have an area to charge mobility scooters and battery powered wheelchairs.
  - Meg's (utility) room or garage area.
- 

**Guide last updated: 7<sup>th</sup> December 2024**